





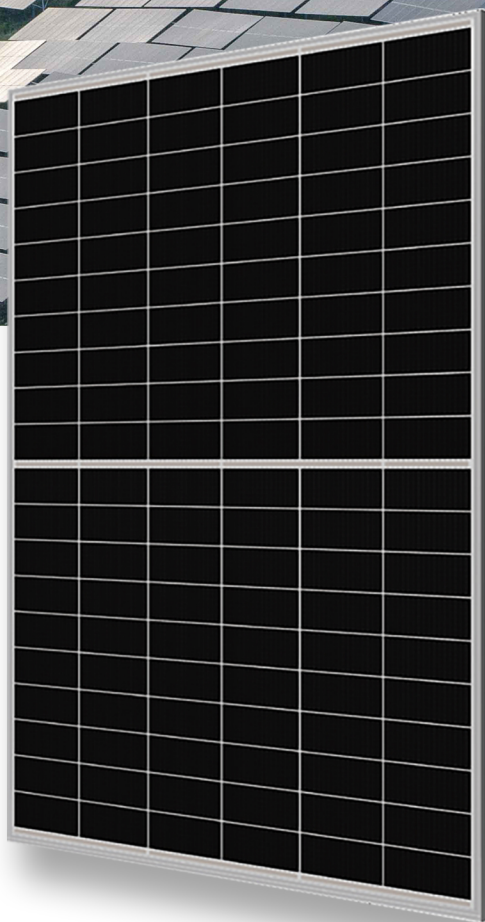


DOUBLE-GLASS 415-440W BHM108N1DGT

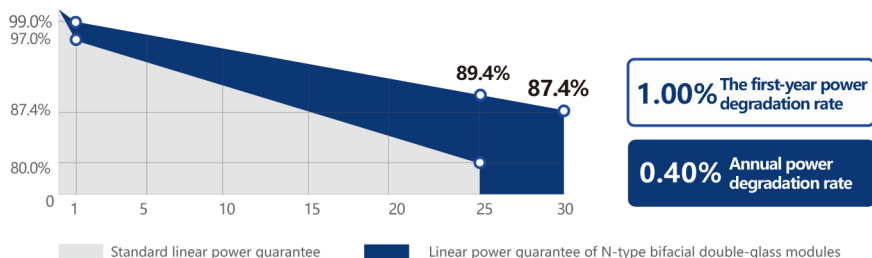
-  Ultra-high bifacial ratio
-  Positive power tolerance: 0 – +3%
-  Excellent anti-PID and anti-LID performance
-  Higher module conversion efficiency (up to 22.53%)
-  Lower current, higher power generation, and lower risk of hot spots
-  12 years quality guarantee and 30 years linear output guarantee



QUALITY MANAGEMENT SYSTEM AND PRODUCT CERTIFICATION

ISO 9001:2015/Quality management system	IEC 61215/61730、IEC62804(PID)、
ISO 14001:2015/Environmental management system	IEC 61701(Salt)/IEC62716(Ammonia)、
ISO 45001:2018/Occupational Health and Safety Management System	IEC 60068-2-68(Sand)

LINEAR POWER GUARANTEE



BHM108N1DGT 415-440W

Electrical performance parameters on the front side Maximum power test tolerance: ±3%

Module model	415W		420W		425W		430W		435W		440W	
	STC	NOCT	STC	NOCT	STC	NOCT	STC	NOCT	STC	NOCT	STC	NOCT
Testing environment	STC	NOCT	STC	NOCT	STC	NOCT	STC	NOCT	STC	NOCT	STC	NOCT
Maximum power[Pmax/W]	415	315	420	318	425	322	430	326	435	330	440	334
Maximum power voltage[Vmp/V]	31.93	30.12	32.14	30.23	32.35	30.47	32.53	30.64	32.74	30.79	32.95	31.04
Maximum power current [Imp/A]	13.00	10.46	13.07	10.52	13.14	10.57	13.22	10.64	13.29	10.72	13.35	10.76
Open-circuit voltage [Voc/V]	37.58	35.42	37.84	35.59	38.09	35.85	38.35	36.13	38.63	36.39	38.90	36.65
Short-circuit current [Isc/A]	13.81	11.12	13.88	11.17	13.95	11.23	14.02	11.28	14.08	11.34	14.14	11.39
Module efficiency [%]	21.25		21.51		21.76		22.02		22.28		22.53	

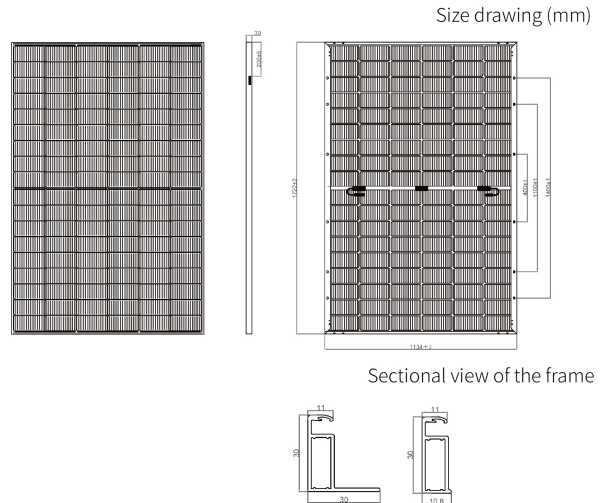
Under the Standard Test Conditions (STC), the irradiance is 1000W/m², the air mass is AM1.5, and the module temperature is 25°C.
Nominal Operating Cell Temperature (NOCT): Irradiance of 800W/m², ambient temperature of 20°C, air mass of AM1.5, and wind speed of 1m/s

Electrical performance parameters on the back side The tolerance for the maximum power test: ±3%

	Module model	415W	420W	425W	430W	435W	440W
5%	Maximum power (pamx)	436	441	446	451	457	462
	Module efficiency (%)	22.3	22.5	22.8	23.1	23.3	23.7
15%	Maximum power (pamx)	477	483	489	494	500	506
	Module efficiency (%)	24.4	24.7	25.0	25.3	25.6	25.9
25%	Maximum power (pamx)	519	525	531	538	544	550
	Module efficiency (%)	26.5	26.8	27.2	27.5	27.8	28.2

Mechanical and operating parameters

Number of cells	108 (6×18)
Junction box	IP68,three diodes
Output cable	4mm ² , length 300mm, length can be customized
Glass	2.0mm single-layer coated semi-tempered glass
Frame	Anodized aluminum alloy frame
Weight	24.5kg±3%
Size	1722x1134x30mm
Package	40HC
Operating temperature	-40°C ~ +85°C
Power tolerance	0~+5 W
Current - voltage tolerance	±4%/±3%
Maximum system voltage	DC1500V (IEC)
Maximum rated fuse current	25A
Nominal operating cell temperature	45±2°C
Safety level	Class II
Fire rating	Class A



Temperature coefficient (STC)

Temperature coefficient of short - circuit current	+0.048%/°C
Temperature coefficient of open - circuit voltage	-0.270%/°C
Temperature coefficient of maximum power	-0.350%/°C

Mechanical load

Maximum static load on the front side	5400Pa
Maximum static load on the back side	2400Pa
Hail test	Hailstones of 25 - millimeter diameter impact at a speed of 23 meters per second

I - V curve (BHM108N1DGT-430W)

