





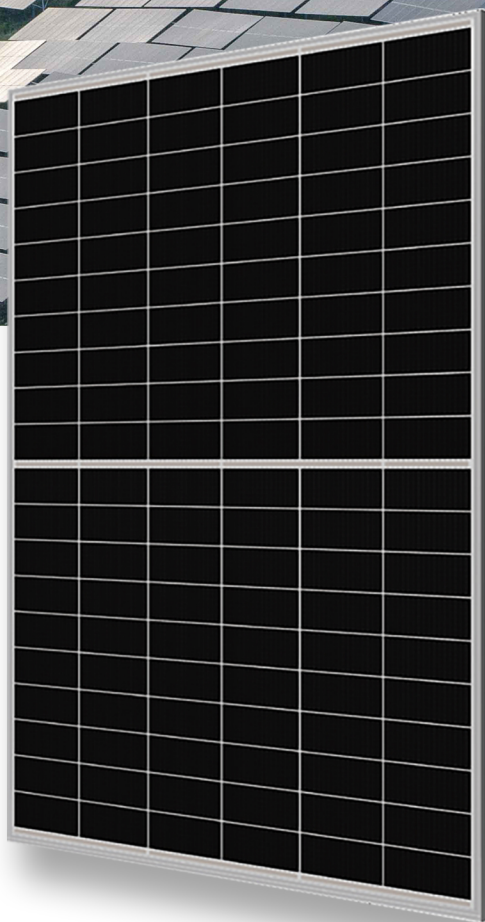


# DOUBLE-GLASS 475-495W BHM120N1DGT

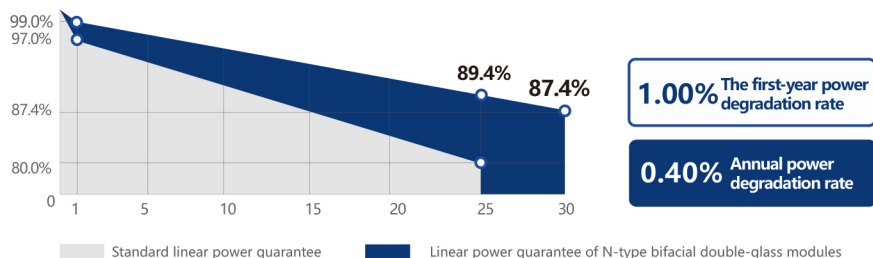
-  Ultra-high bifacial ratio
-  Positive power tolerance: 0 – +3%
-  Excellent anti-PID and anti-LID performance
-  Higher module conversion efficiency (up to 22.88%)
-  Lower current, higher power generation, and lower risk of hot spots
-  12 years quality guarantee and 30 years linear output guarantee



## QUALITY MANAGEMENT SYSTEM AND PRODUCT CERTIFICATION

ISO 9001:2015/Quality management system	IEC 61215/61730、IEC62804(PID)、
ISO 14001:2015/Environmental management system	IEC 61701(Salt)/IEC62716(Ammonia)、
ISO 45001:2018/Occupational Health and Safety Management System	IEC 60068-2-68(Sand)

## LINEAR POWER GUARANTEE



# BHM120N1DGT 475-495W

## Electrical performance parameters on the front side Maximum power test tolerance: $\pm 3\%$

Module model	475W		480W		485W		490W		495W	
	STC	NOCT	STC	NOCT	STC	NOCT	STC	NOCT	STC	NOCT
Testing environment	STC	NOCT	STC	NOCT	STC	NOCT	STC	NOCT	STC	NOCT
Maximum power [Pmax/W]	475	356	480	360	485	364	490	368	495	371
Maximum power voltage [Vmp/V]	35.77	34.45	37.07	34.75	37.37	35.01	37.67	35.30	37.99	35.59
Maximum power current [Imp/A]	12.92	10.34	12.95	10.36	12.98	10.39	13.01	10.41	13.03	10.43
Open-circuit voltage [Voc/V]	42.60	41.16	42.78	41.40	42.90	41.68	43.08	41.92	43.20	42.27
Short-circuit current [Isc/A]	13.52	10.82	13.58	10.87	13.63	10.91	13.69	10.96	13.72	10.98
Module efficiency [%]	21.95		22.18		22.42		22.65		22.88	

Under the Standard Test Conditions (STC), the irradiance is  $1000\text{W}/\text{m}^2$ , the air mass is AM1.5, and the module temperature is  $25^\circ\text{C}$ .  
Nominal Operating Cell Temperature (NOCT): Irradiance of  $800\text{W}/\text{m}^2$ , ambient temperature of  $20^\circ\text{C}$ , air mass of AM1.5, and wind speed of  $1\text{m}/\text{s}$

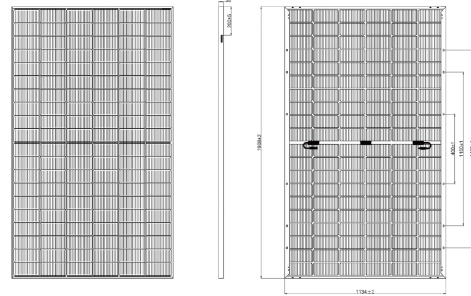
## Electrical performance parameters on the back side The tolerance for the maximum power test: $\pm 3\%$

Module model	475W	480W	485W	490W	495W	
	5%	Maximum power (pamx)	499	504	509	515
	Module efficiency (%)	23.0	23.2	23.5	23.7	24.0
15%	Maximum power (pamx)	546	552	558	564	569
	Module efficiency (%)	25.2	25.5	25.7	26.0	26.3
25%	Maximum power (pamx)	594	600	606	613	619
	Module efficiency (%)	27.4	27.7	28.0	28.3	28.5

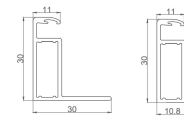
## Mechanical and operating parameters

Number of cells	120 (6×20)
Junction box	IP68, three diodes
Output cable	4mm <sup>2</sup> , length 300mm, length can be customized
Glass	2.0mm single-layer coated semi-tempered glass
Frame	Anodized aluminum alloy frame
Weight	26.9kg $\pm 3\%$
Size	1908x1134x30mm
Package	40HC
Operating temperature	$-40^\circ\text{C} \sim +85^\circ\text{C}$
Power tolerance	0~+5 W
Current - voltage tolerance	$\pm 4\% / \pm 3\%$
Maximum system voltage	DC1500V (IEC)
Maximum rated fuse current	25A
Nominal operating cell temperature	$45 \pm 2^\circ\text{C}$
Safety level	Class II
Fire rating	Class A

Size drawing (mm)



Sectional view of the frame



## Temperature coefficient (STC)

Temperature coefficient of short - circuit current	+0.048%/°C
Temperature coefficient of open - circuit voltage	-0.270%/°C
Temperature coefficient of maximum power	-0.350%/°C

## Mechanical load

Maximum static load on the front side	5400Pa
Maximum static load on the back side	2400Pa
Hail test	Hailstones of 25 - millimeter diameter impact at a speed of 23 meters per second

## I - V curve (BHM120N1DGT-490W)

