





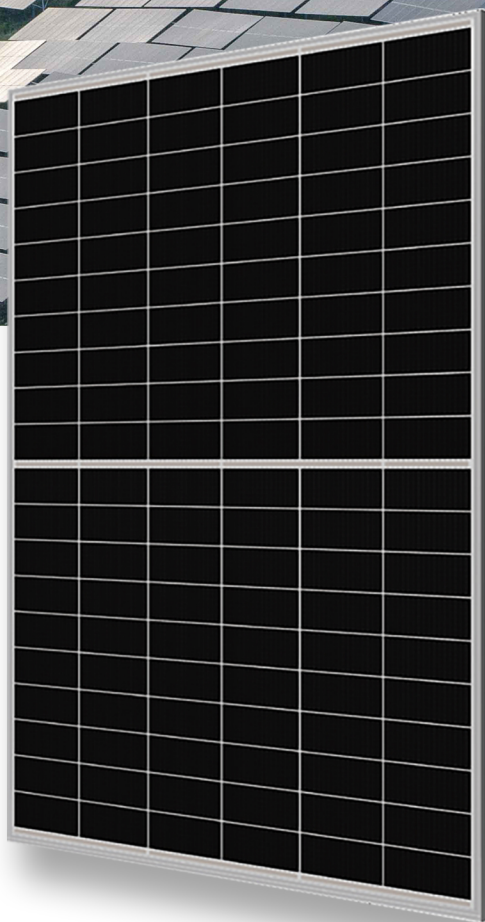


DOUBLE-GLASS 615-645W BHM120N3DGT

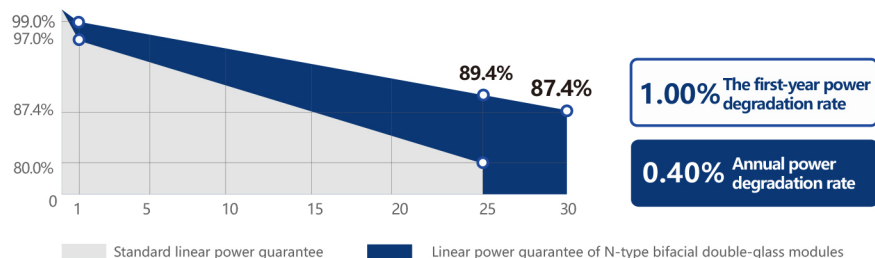
-  Ultra-high bifacial ratio
-  Positive power tolerance: 0 – +3%
-  Excellent anti-PID and anti-LID performance
-  Higher module conversion efficiency (up to 22.79%)
-  Lower current, higher power generation, and lower risk of hot spots
-  12 years quality guarantee and 30 years linear output guarantee



QUALITY MANAGEMENT SYSTEM AND PRODUCT CERTIFICATION

ISO 9001:2015/Quality management system	IEC 61215/61730、IEC62804(PID)、
ISO 14001:2015/Environmental management system	IEC 61701(Salt)IEC62716(Ammonia)、
ISO 45001:2018/Occupational Health and Safety Management System	IEC 60068-2-68(Sand)

LINEAR POWER GUARANTEE



BHM120N3DGT 615-645W

Electrical performance parameters on the front side Maximum power test tolerance: $\pm 3\%$

Module model	615W		620W		625W		630W		635W		640W		645W	
	STC	NOCT	STC	NOCT	STC	NOCT	STC	NOCT	STC	NOCT	STC	NOCT	STC	NOCT
Testing environment														
Maximum power [Pmax/W]	615	465	620	469	625	472	630	476	635	480	640	484	645	488
Maximum power voltage [Vmp/V]	35.51	33.60	35.71	33.80	35.91	33.90	36.11	34.10	36.31	34.30	36.51	34.50	36.71	34.70
Maximum power current [Imp/A]	17.33	13.85	17.37	13.89	17.41	13.93	17.46	13.96	17.50	14.00	17.54	14.03	17.58	14.07
Open-circuit voltage [Voc/V]	42.71	40.40	42.91	40.60	43.11	40.80	43.31	41.00	43.51	41.20	43.71	41.40	43.91	41.60
Short-circuit current [Isc/A]	18.26	14.72	18.31	14.77	18.36	14.81	18.41	14.85	18.46	14.89	18.51	14.93	18.56	14.97
Module efficiency [%]	21.73		21.91		22.08		22.26		22.44		22.61		22.79	

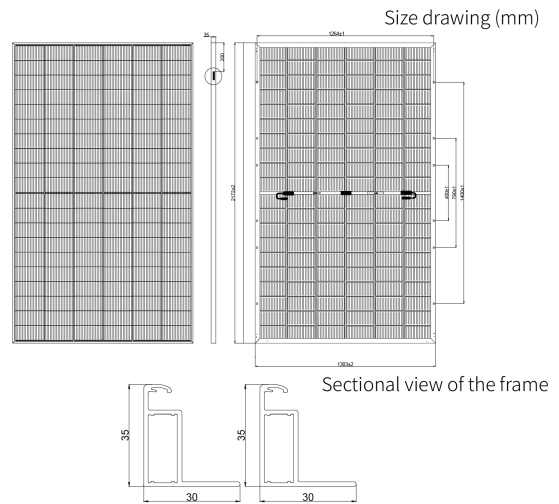
Under the Standard Test Conditions (STC), the irradiance is 1000W/m², the air mass is AM1.5, and the module temperature is 25°C.
Nominal Operating Cell Temperature (NOCT): Irradiance of 800W/m², ambient temperature of 20°C, air mass of AM1.5, and wind speed of 1m/s

Electrical performance parameters on the back side The tolerance for the maximum power test: $\pm 3\%$

	Module model	615W	620W	625W	630W	635W	640W	645W
5%	Maximum power (pamx)	646	651	656	662	667	672	677
	Module efficiency (%)	22.82	23.00	23.19	23.37	23.56	23.74	23.93
15%	Maximum power (pamx)	677	682	688	693	699	704	710
	Module efficiency (%)	23.90	24.10	24.29	24.49	24.68	24.88	25.07
25%	Maximum power (pamx)	738	744	750	756	762	768	774
	Module efficiency (%)	26.08	26.29	26.50	26.71	26.92	27.14	27.35

Mechanical and operating parameters

Number of cells	120 (6×20)
Junction box	IP68, three diodes
Output cable	4mm ² , length 300mm, length can be customized
Glass	2.0mm single-layer coated semi-tempered glass
Frame	Anodized aluminum alloy frame
Weight	31kg $\pm 3\%$
Size	2172x1303x35mm
Package	40HC
Operating temperature	-40°C ~ +85°C
Power tolerance	0~+5 W
Current - voltage tolerance	$\pm 4\% / \pm 3\%$
Maximum system voltage	DC1500V (IEC)
Maximum rated fuse current	25A
Nominal operating cell temperature	45 ± 2 °C
Safety level	Class II
Fire rating	Class A



Temperature coefficient (STC)

Temperature coefficient of short - circuit current	+0.048%/°C
Temperature coefficient of open - circuit voltage	-0.270%/°C
Temperature coefficient of maximum power	-0.350%/°C

Mechanical load

Maximum static load on the front side	5400Pa
Maximum static load on the back side	2400Pa
Hail test	Hailstones of 25 - millimeter diameter impact at a speed of 23 meters per second

I - V curve (BHM120N3DGT-630W)

