





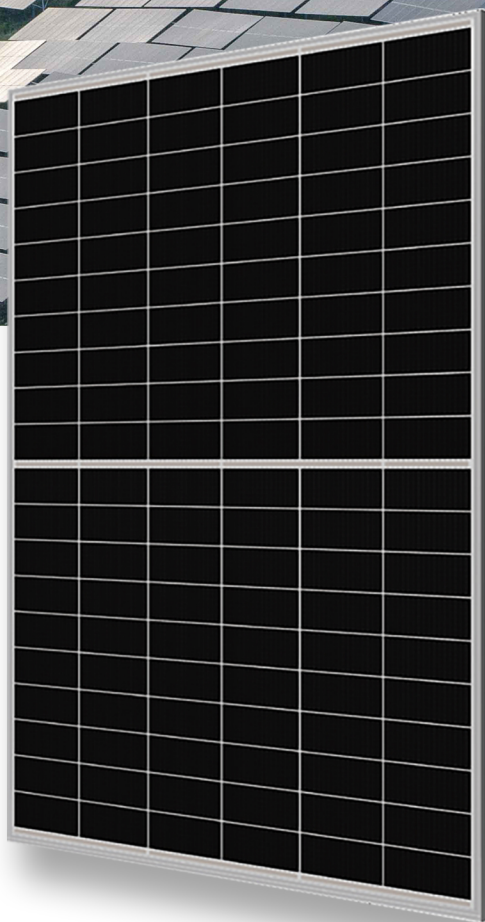




DOUBLE-GLASS 520-540W BHM132N1DGT

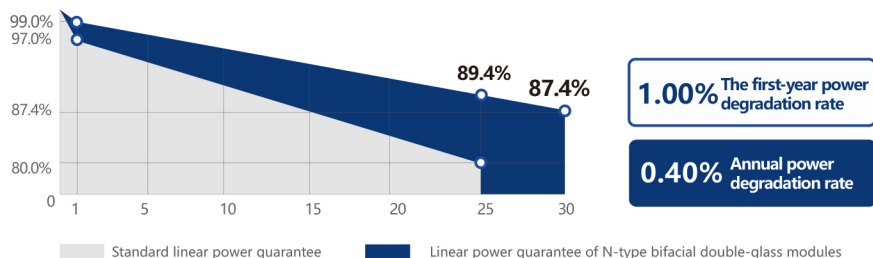
-  Ultra-high bifacial ratio
-  Positive power tolerance: 0 – +3%
-  Excellent anti-PID and anti-LID performance
-  Higher module conversion efficiency (up to 22.74%)
-  Lower current, higher power generation, and lower risk of hot spots
-  12 years quality guarantee and 30 years linear output guarantee



QUALITY MANAGEMENT SYSTEM AND PRODUCT CERTIFICATION

ISO 9001:2015/Quality management system	IEC 61215/61730、IEC62804(PID)、
ISO 14001:2015/Environmental management system	IEC 61701(Salt)/IEC62716(Ammonia)、
ISO 45001:2018/Occupational Health and Safety Management System	IEC 60068-2-68(Sand)

LINEAR POWER GUARANTEE



BHM132N1DGT 520-540W

Electrical performance parameters on the front side Maximum power test tolerance: $\pm 3\%$

Module model	520W		525W		530W		535W		540W	
	STC	NOCT	STC	NOCT	STC	NOCT	STC	NOCT	STC	NOCT
Testing environment	STC	NOCT	STC	NOCT	STC	NOCT	STC	NOCT	STC	NOCT
Maximum power[Pmax/W]	520	390	525	394	530	398	535	401	540	405
Maximum power voltage[Vmp/V]	40.28	37.76	40.61	38.11	40.90	38.38	41.22	38.64	41.51	38.91
Maximum power current [Imp/A]	12.91	10.33	12.93	10.34	12.96	10.37	12.98	10.38	13.01	10.41
Open-circuit voltage [Voc/V]	46.86	45.11	46.93	45.49	47.13	45.73	47.26	45.96	47.34	46.29
Short-circuit current [Isc/A]	13.51	10.81	13.54	10.83	13.60	10.88	13.64	10.91	13.68	10.94
Module efficiency [%]	21.90		22.11		22.32		22.53		22.74	

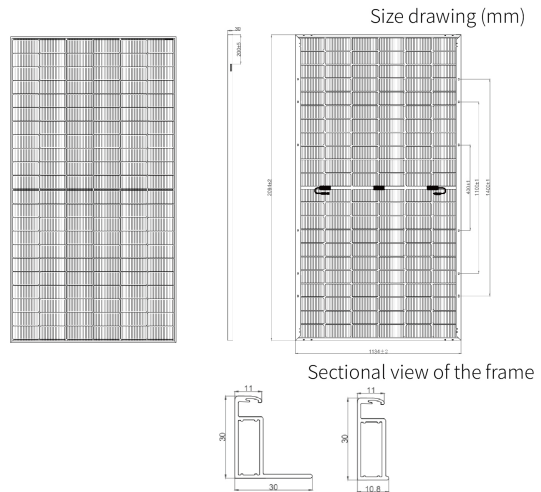
Under the Standard Test Conditions (STC), the irradiance is 1000W/m², the air mass is AM1.5, and the module temperature is 25°C.
Nominal Operating Cell Temperature (NOCT): Irradiance of 800W/m², ambient temperature of 20°C, air mass of AM1.5, and wind speed of 1m/s

Electrical performance parameters on the back side The tolerance for the maximum power test: $\pm 3\%$

Module model		520W	525W	530W	535W	540W
5%	Maximum power (pamx)	546	551	557	562	567
	Module efficiency (%)	22.9	23.2	23.4	23.6	23.8
15%	Maximum power (pamx)	598	604	610	615	621
	Module efficiency (%)	25.1	25.4	25.7	25.9	26.1
25%	Maximum power (pamx)	650	656	663	669	675
	Module efficiency (%)	27.3	27.6	27.9	28.1	28.4

Mechanical and operating parameters

Number of cells	132 (6×22)
Junction box	IP68,three diodes
Output cable	4mm ² , length 300mm, length can be customized
Glass	2.0mm single-layer coated semi-tempered glass
Frame	Anodized aluminum alloy frame
Weight	26.9kg $\pm 3\%$
Size	2094x1134x30mm
Package	40HC
Operating temperature	-40°C ~ +85°C
Power tolerance	0~+5 W
Current - voltage tolerance	$\pm 4\%/\pm 3\%$
Maximum system voltage	DC1500V (IEC)
Maximum rated fuse current	25A
Nominal operating cell temperature	45 $\pm 2^\circ$ C
Safety level	Class II
Fire rating	Class A



Temperature coefficient (STC)

Temperature coefficient of short - circuit current	+0.048%/°C
Temperature coefficient of open - circuit voltage	-0.270%/°C
Temperature coefficient of maximum power	-0.350%/°C

Mechanical load

Maximum static load on the front side	5400Pa
Maximum static load on the back side	2400Pa
Hail test	Hailstones of 25 - millimeter diameter impact at a speed of 23 meters per second

I - V curve (BHM132N1DGT-535W)

