





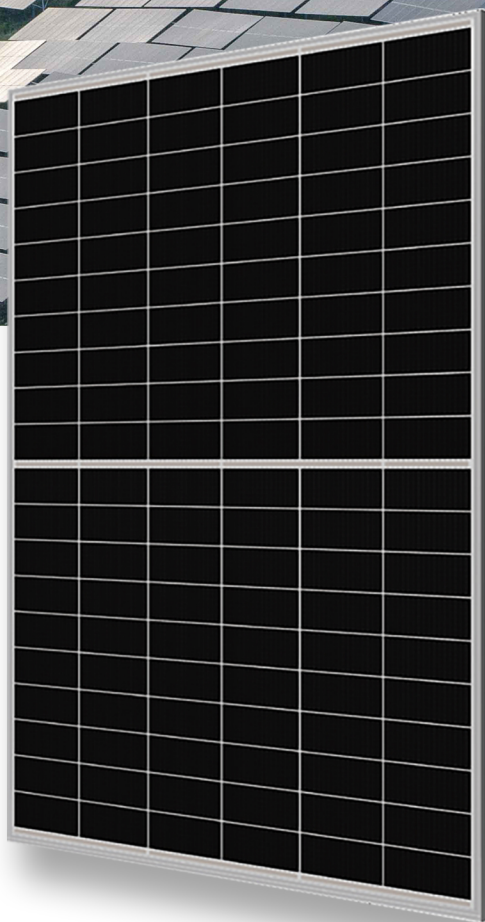


DOUBLE-GLASS 680-710W BHM132N3DGT

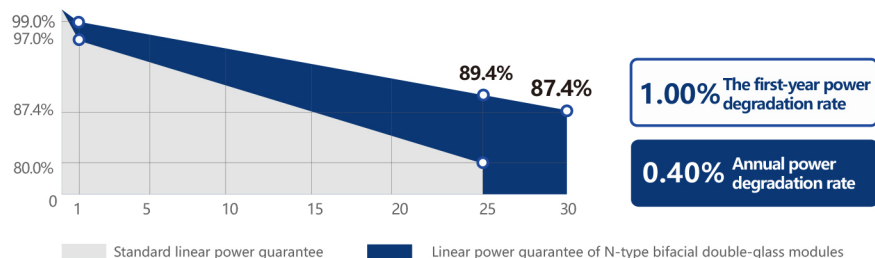
-  Ultra-high bifacial ratio
-  Positive power tolerance: 0 – +3%
-  Excellent anti-PID and anti-LID performance
-  Higher module conversion efficiency (up to 22.9%)
-  Lower current, higher power generation, and lower risk of hot spots
-  12 years quality guarantee and 30 years linear output guarantee



QUALITY MANAGEMENT SYSTEM AND PRODUCT CERTIFICATION

ISO 9001:2015/Quality management system	IEC 61215/61730、IEC62804(PID)、
ISO 14001:2015/Environmental management system	IEC 61701(Salt)/IEC62716(Ammonia)、
ISO 45001:2018/Occupational Health and Safety Management System	IEC 60068-2-68(Sand)

LINEAR POWER GUARANTEE



BHM132N3DGT 680-710W

Electrical performance parameters on the front side Maximum power test tolerance: $\pm 3\%$

Module model	680W		685W		690W		695W		700W		705W		710W	
	STC	NOCT	STC	NOCT	STC	NOCT	STC	NOCT	STC	NOCT	STC	NOCT	STC	NOCT
Testing environment	STC	NOCT	STC	NOCT	STC	NOCT	STC	NOCT	STC	NOCT	STC	NOCT	STC	NOCT
Maximum power [P _{max} /W]	680	514	685	518	690	522	695	526	700	529	705	534	710	538
Maximum power voltage [V _{mp} /V]	39.20	37.10	39.40	37.2	39.60	37.40	39.80	37.60	40.00	37.80	40.19	38.00	40.39	38.20
Maximum power current [I _{mp} /A]	17.35	13.88	17.39	13.91	17.43	13.94	17.47	13.97	17.51	14.00	17.55	14.06	17.59	14.09
Open-circuit voltage [V _{oc} /V]	47.10	44.60	47.30	44.80	47.50	45.00	47.70	45.20	47.90	45.40	48.11	45.60	48.31	45.80
Short-circuit current [I _{sc} /A]	18.29	14.75	18.34	14.79	18.39	14.83	18.44	14.87	18.49	14.91	18.54	14.95	18.59	14.99
Module efficiency [%]	21.9		22.1		22.2		22.4		22.5		22.7		22.9	

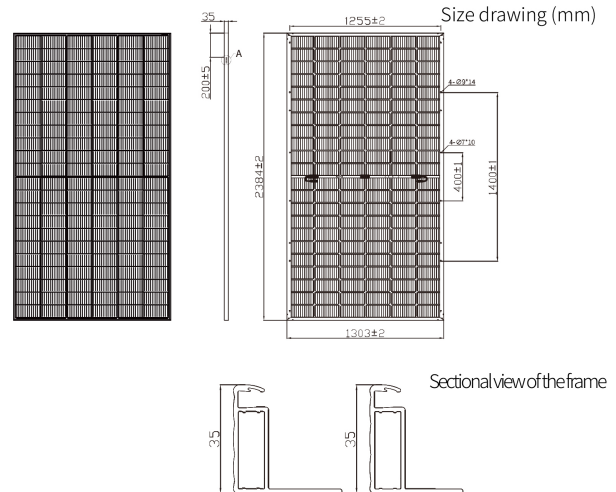
Under the Standard Test Conditions (STC), the irradiance is 1000W/m², the air mass is AM1.5, and the module temperature is 25°C.
Nominal Operating Cell Temperature (NOCT): Irradiance of 800W/m², ambient temperature of 20°C, air mass of AM1.5, and wind speed of 1m/s

Electrical performance parameters on the back side The tolerance for the maximum power test: $\pm 3\%$

Module model		680W	685W	690W	695W	700W	705W	710W
5%	Maximum power (p _{mx})	714	719	725	730	735	740	746
	Module efficiency (%)	23.0	23.1	23.3	23.5	23.7	23.8	24.0
15%	Maximum power (p _{mx})	748	754	759	765	770	776	781
	Module efficiency (%)	24.1	24.3	24.4	24.6	24.8	25.0	25.1
25%	Maximum power (p _{mx})	816	822	828	834	840	846	852
	Module efficiency (%)	26.3	26.5	26.7	26.8	27.0	27.2	27.4

Mechanical and operating parameters

Number of cells	132(6×22)
Junction box	IP68, three diodes
Output cable	4mm ² , length 300mm, length can be customized
Glass	2.0mm single-layer coated semi-tempered glass
Frame	Anodized aluminum alloy frame
Weight	38.0kg $\pm 3\%$
Size	2384x1303x30mm
Package	40HC
Operating temperature	-40°C ~ +85°C
Power tolerance	0~+5 W
Current - voltage tolerance	$\pm 4\%/\pm 3\%$
Maximum system voltage	DC1500V (IEC)
Maximum rated fuse current	30A
Nominal operating cell temperature	45 $\pm 2^\circ\text{C}$
Safety level	Class II
Fire rating	Class A



Temperature coefficient (STC)

Mechanical load

Temperature coefficient of short - circuit current	+0.05%/°C	Maximum static load on the front side	5400Pa
Temperature coefficient of open - circuit voltage	-0.25%/°C	Maximum static load on the back side	2400Pa
Temperature coefficient of maximum power	-0.29%/°C	Hail test	Hailstones of 25 - millimeter diameter impact at a speed of 23 meters per second

I-V 曲线 (BHM132N3DGT-685W)

