





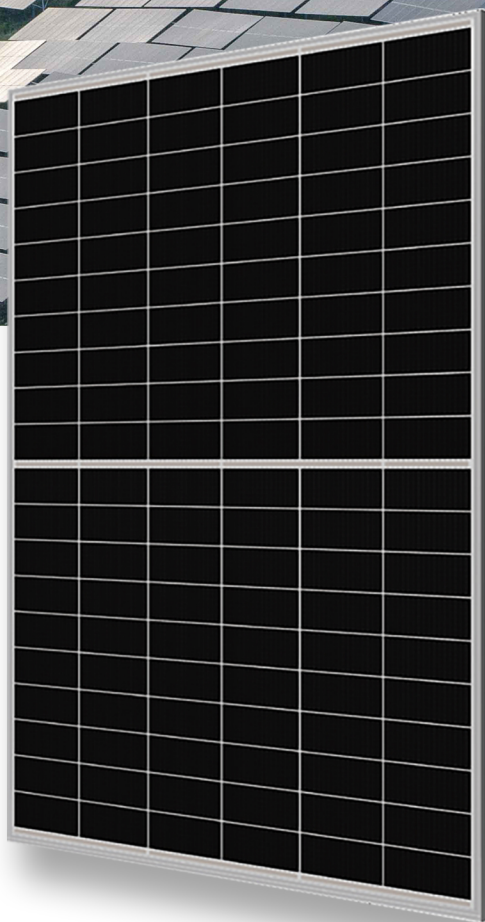




DOUBLE-GLASS 600-620W BHM132N4DGT

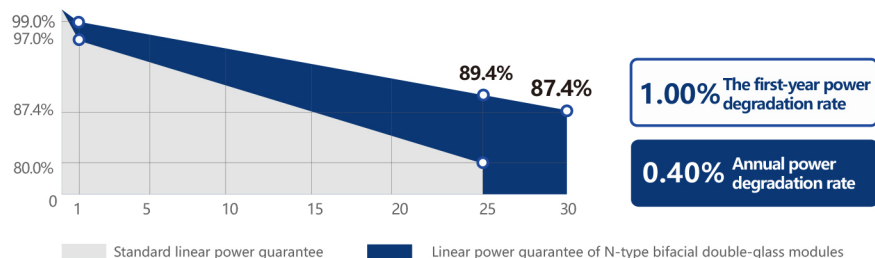
-  Ultra-high bifacial ratio
-  Positive power tolerance: 0 – +3%
-  Excellent anti-PID and anti-LID performance
-  Higher module conversion efficiency (up to 22.95%)
-  Lower current, higher power generation, and lower risk of hot spots
-  12 years quality guarantee and 30 years linear output guarantee



QUALITY MANAGEMENT SYSTEM AND PRODUCT CERTIFICATION

ISO 9001:2015/Quality management system	IEC 61215/61730、IEC62804(PID)、
ISO 14001:2015/Environmental management system	IEC 61701(Salt)/IEC62716(Ammonia)、
ISO 45001:2018/Occupational Health and Safety Management System	IEC 60068-2-68(Sand)

LINEAR POWER GUARANTEE



BHM132N4DGT 600-620W

Electrical performance parameters on the front side Maximum power test tolerance: $\pm 3\%$

Module model	600W		605W		610W		615W		620W	
	STC	NOCT	STC	NOCT	STC	NOCT	STC	NOCT	STC	NOCT
Testing environment										
Maximum power [Pmax/W]	600	495	605	462	610	466	615	471	620	475
Maximum power voltage [Vmp/V]	40.31	37.91	40.51	38.11	40.79	38.29	40.99	38.51	41.21	38.71
Maximum power current [Imp/A]	14.88	12.11	14.93	12.12	14.95	12.17	15.00	12.23	15.04	12.27
Open-circuit voltage [Voc/V]	48.42	46.02	48.71	46.21	48.99	46.49	49.31	46.79	49.60	47.10
Short-circuit current [Isc/A]	15.69	12.63	15.72	12.66	15.76	12.69	15.79	12.74	15.82	12.77
Module efficiency [%]	22.21		22.40		22.58		22.77		22.95	

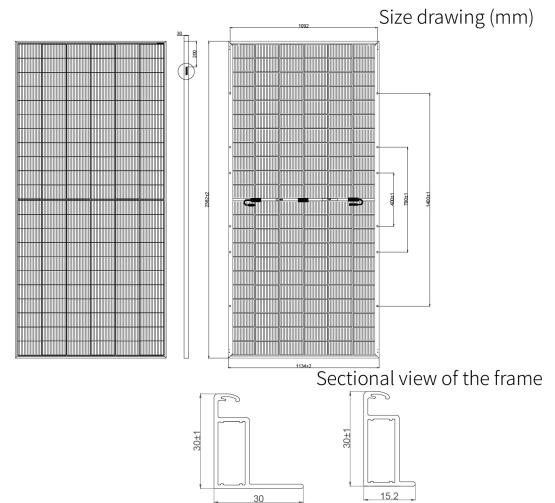
Under the Standard Test Conditions (STC), the irradiance is $1000\text{W}/\text{m}^2$, the air mass is AM1.5, and the module temperature is 25°C .
Nominal Operating Cell Temperature (NOCT): Irradiance of $800\text{W}/\text{m}^2$, ambient temperature of 20°C , air mass of AM1.5, and wind speed of $1\text{m}/\text{s}$

Electrical performance parameters on the back side The tolerance for the maximum power test: $\pm 3\%$

	Module model	600W	605W	610W	615W	620W
5%	Maximum power (pamx)	630	635	641	646	651
	Module efficiency (%)	23.32	23.52	23.71	23.91	24.10
15%	Maximum power (pamx)	690	696	702	707	713
	Module efficiency (%)	25.5	25.7	25.9	26.18	26.4
25%	Maximum power (pamx)	750	756	763	769	775
	Module efficiency (%)	27.77	28.00	28.23	28.46	28.2

Mechanical and operating parameters

Number of cells	132(6×22)
Junction box	IP68, three diodes
Output cable	4mm ² , length 300mm, length can be customized
Glass	2.0mm single-layer coated semi-tempered glass
Frame	Anodized aluminum alloy frame
Weight	32.5kg $\pm 3\%$
Size	2382×1134×30mm
Package	40HC
Operating temperature	$-40^\circ\text{C} \sim +85^\circ\text{C}$
Power tolerance	0~+5 W
Current - voltage tolerance	$\pm 4\%/\pm 3\%$
Maximum system voltage	DC1500V (IEC)
Maximum rated fuse current	30A
Nominal operating cell temperature	$45\pm 2^\circ\text{C}$
Safety level	Class II
Fire rating	Class A



Temperature coefficient (STC)

Temperature coefficient of short - circuit current	+0.043%/°C
Temperature coefficient of open - circuit voltage	-0.240%/°C
Temperature coefficient of maximum power	-0.300%/°C

Mechanical load

Maximum static load on the front side	5400Pa
Maximum static load on the back side	2400Pa
Hail test	Hailstones of 25 - millimeter diameter impact at a speed of 23 meters per second

I - V curve (BHM132N4DGT-600W)

