





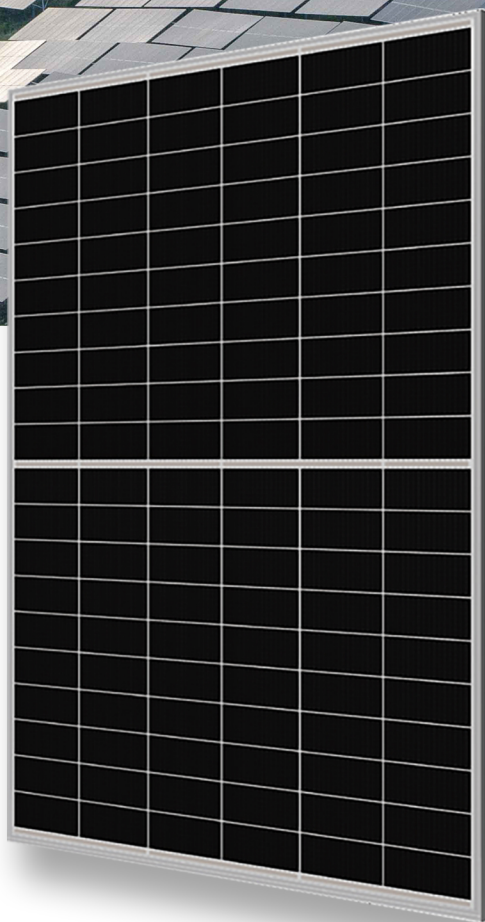




# DOUBLE-GLASS 615-650W BHM156N1DGT

-  Ultra-high bifacial ratio
-  Positive power tolerance: 0 – +3%
-  Excellent anti-PID and anti-LID performance
-  Higher module conversion efficiency (up to 23.25%)
-  Lower current, higher power generation, and lower risk of hot spots
-  12 years quality guarantee and 30 years linear output guarantee

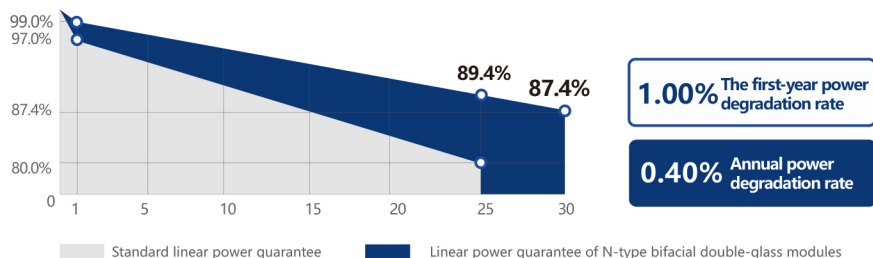


## QUALITY MANAGEMENT SYSTEM AND PRODUCT CERTIFICATION

ISO 9001:2015/Quality management system  
 ISO 14001:2015/Environmental management system  
 ISO 45001:2018/Occupational Health and Safety Management System

IEC 61215/61730、IEC62804(PID)、  
 IEC 61701(Salt)IEC62716(Ammonia)、  
 IEC 60068-2-68(Sand)

## LINEAR POWER GUARANTEE



# BHM156N1DGT 615-650W

## Electrical performance parameters on the front side Maximum power test tolerance: $\pm 3\%$

Module model	615W		620W		625W		630W		635W		640W		645W		650W	
	STC	NOCT	STC	NOCT	STC	NOCT	STC	NOCT	STC	NOCT	STC	NOCT	STC	NOCT	STC	NOCT
Testing environment	STC	NOCT	STC	NOCT	STC	NOCT	STC	NOCT	STC	NOCT	STC	NOCT	STC	NOCT	STC	NOCT
Maximum power [Pmax/W]	615	463	620	467	625	471	630	475	635	479	640	483	645	487	650	491
Maximum power voltage [Vmp/V]	47.20	44.39	47.37	44.54	47.54	44.69	47.70	44.86	47.86	44.99	48.01	45.10	48.17	45.26	48.33	45.42
Maximum power current [Imp/A]	13.03	10.44	13.09	10.49	13.15	10.54	13.21	10.59	13.27	10.65	13.33	10.71	13.39	10.76	13.45	10.81
Open-circuit voltage [Voc/V]	56.69	52.72	56.82	52.82	56.95	52.92	57.08	53.02	57.21	53.11	57.22	53.24	57.43	53.35	57.62	53.57
Short-circuit current [Isc/A]	13.68	11.01	13.74	11.08	13.80	11.14	13.86	11.21	13.92	11.28	13.98	11.34	14.04	11.41	14.10	11.46
Module efficiency [%]	22.00		22.18		22.36		22.54		22.72		22.90		23.07		23.25	

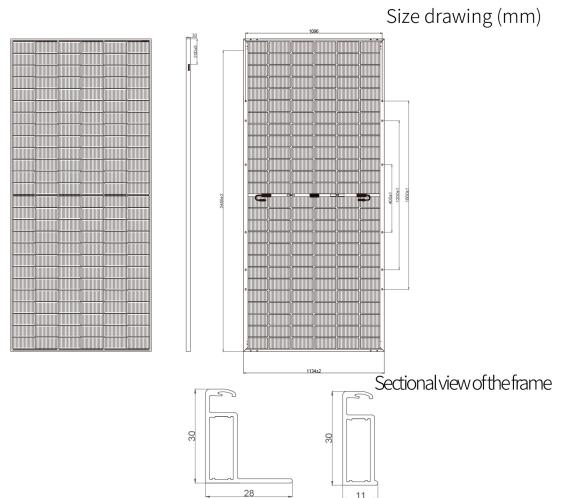
Under the Standard Test Conditions (STC), the irradiance is  $1000\text{W/m}^2$ , the air mass is AM1.5, and the module temperature is  $25^\circ\text{C}$ .  
Nominal Operating Cell Temperature (NOCT): Irradiance of  $800\text{W/m}^2$ , ambient temperature of  $20^\circ\text{C}$ , air mass of AM1.5, and wind speed of  $1\text{m/s}$

## Electrical performance parameters on the back side The tolerance for the maximum power test: $\pm 3\%$

Module model		615W	620W	625W	630W	635W	640W	645W	650W
5%	Maximum power (pamx)	645	651	656	661	666	672	677	683
	Module efficiency (%)	23.07	23.29	23.47	23.65	23.83	24.04	24.23	24.42
15%	Maximum power (pamx)	707	713	718	724	730	736	742	748
	Module efficiency (%)	25.29	25.51	25.69	25.90	26.12	26.33	26.54	26.74
25%	Maximum power (pamx)	768	775	781	787	793	800	806	813
	Module efficiency (%)	27.47	27.73	27.94	28.15	28.37	28.62	28.84	29.07

## Mechanical and operating parameters

Number of cells	156(6×26)
Junction box	IP68, three diodes
Output cable	4mm <sup>2</sup> , length 300mm, length can be customized
Glass	2.0mm single-layer coated semi-tempered glass
Frame	Anodized aluminum alloy frame
Weight	34.0kg $\pm 3\%$
Size	2465x1134x30mm
Package	40HC
Operating temperature	$-40^\circ\text{C} \sim +85^\circ\text{C}$
Power tolerance	0~+5 W
Current - voltage tolerance	$\pm 4\%/\pm 3\%$
Maximum system voltage	DC1500V (IEC)
Maximum rated fuse current	25A
Nominal operating cell temperature	$45 \pm 2^\circ\text{C}$
Safety level	Class II
Fire rating	Class A



## Temperature coefficient (STC)

Temperature coefficient of short - circuit current	+0.048%/°C
Temperature coefficient of open - circuit voltage	-0.270%/°C
Temperature coefficient of maximum power	-0.350%/°C

## Mechanical load

Maximum static load on the front side	5400Pa
Maximum static load on the back side	2400Pa
Hail test	Hailstones of 25 - millimeter diameter impact at a speed of 23 meters per second

## I - V curve (BHM156N1DGT-615W)

